



ArcticBlue®

# Spectra ArcticBlue: High-Density, Low-Cost Storage

Balancing Cost, Capacity and Performance

The Spectra® ArcticBlue® Disk Solution, powered by the Spectra® BlackPearl® Converged Storage System, is a modern, simple, object-based, capacity-intensive storage system that is easy to manage and scales as needed from terabytes into petabytes, allowing companies to manage their storage cost effectively. Simply put, it is a storage subsystem with a simple interface that helps consolidate islands of storage and allows for the sharing of data amongst a host of applications to enable efficient, innovative workflows. ArcticBlue delivers a low total cost of ownership (TCO), and easily and quickly adapts to changing workflows with evolving business needs.

## Flexible Usage Model



- Nearline storage with fast, concurrent access
- Disk farm for large-scale asset repository
- Well-suited for short to long-term retention
- Data protection and cloud disaster recovery
- On-premise cloud

## Low Cost, High-Performance Storage



- 10 to 12 cents per gigabyte
- Power-down increases life of system up to 7 years
- Eliminates need for rip and replace of disk system every 3 to 4 years
- Provides power and space savings

## Data Security and Integrity



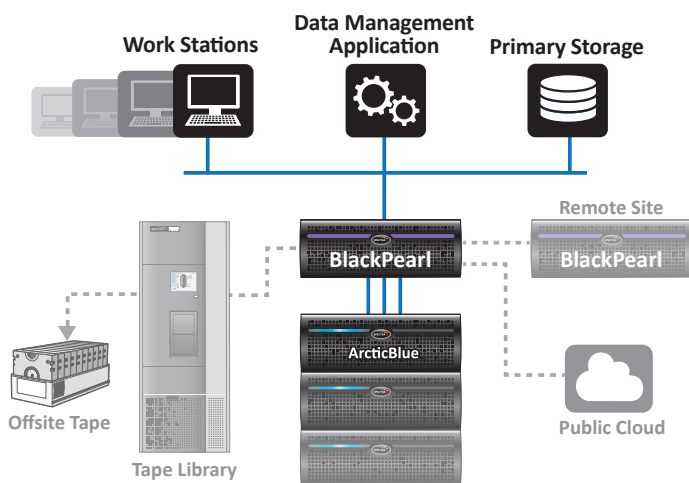
- Copies across bands of storage
- Optional copies to tape
- Optional copies to cloud
- Optional copies to another ArcticBlue

## Scale In Performance and Capacity



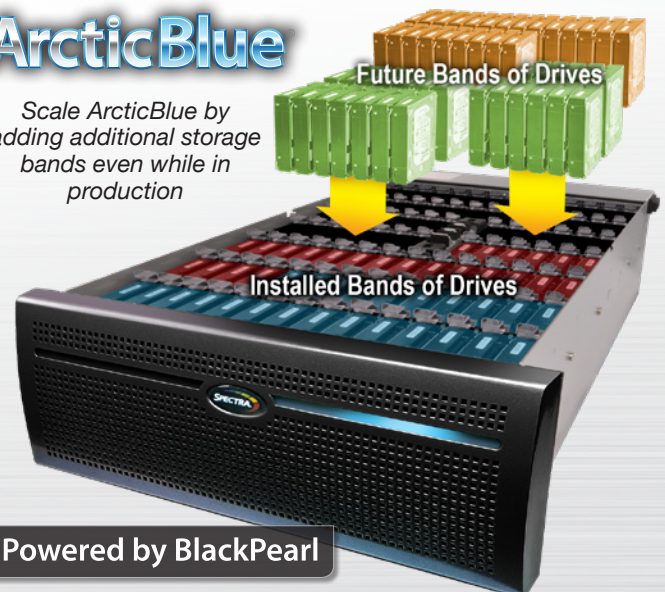
- Add storage bands (hot)
- Add storage nodes (hot)
- Scale to many petabytes
- Performance increases with added capacity

## Typical BlackPearl Environment



ArcticBlue

Scale ArcticBlue by  
adding additional storage  
bands even while in  
production



Powered by BlackPearl

## ArcticBlue Power Down

The spin-down disk technology of ArcticBlue intelligently powers down bands of storage when idle, which minimizes the degradation of disks – extending the life of the disks up to seven years. This powerful feature alleviates the need for a subsystem refresh in three or four years, providing significant cost savings in procuring, and deploying a new system.

## Scalability

Not only is ArcticBlue reliable (up to seven years of life) and economical (as low as 10 cents a gigabyte), it also easily scales to accommodate ever-growing content. Users can easily increase capacity (to over 10PB) and performance by adding additional bands or expansion nodes. Added bands will automatically provision into available storage.

## Content Integrity

- Continuous checks for bit rot and automatic error corrections
- Erasure coded checksum verification at the file or file-part level
- Optional multiple copies of assets on separate bands, or replicated on other ArcticBlue systems (local or remote)
- Optional disaster recovery copies on tape (within a Spectra library or vaulted offsite) or on public cloud

## Multi-Tenancy

Having multiple applications is commonplace in modern media workflows. Sharing a storage platform for multiple applications, across multiple workflows, is crucial to keeping TCO of storage as low as possible. Administrators can create users, groups and buckets, allowing multiple applications to share a single ArcticBlue system.

## Access Control

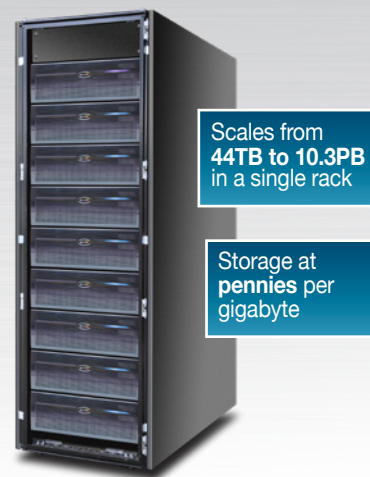
The administrator can set up access control lists (ACL) to share content between different users or applications on a per-bucket basis. The access lists include options for read, write, list, job and delete-control.

## High Availability

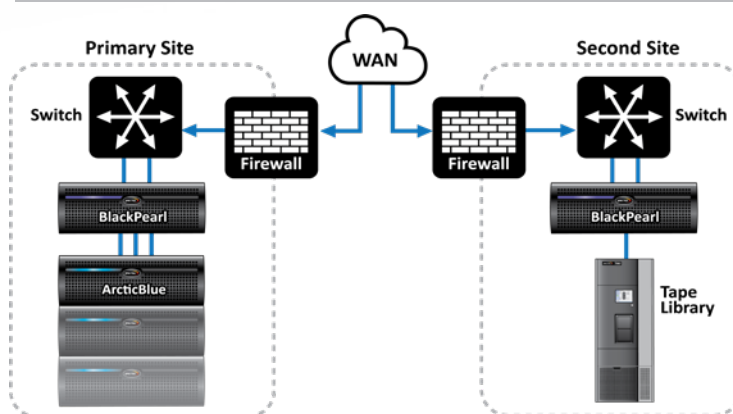
Protecting content to ensure availability is just as critical as having fast concurrent access to data. If multi-site replication is not an option, then having an ArcticBlue HotPair option ensures content availability at a single site. HotPair is an automated way for the system to recover in a minimal amount of time.

## Bottom Line – Value Proposition

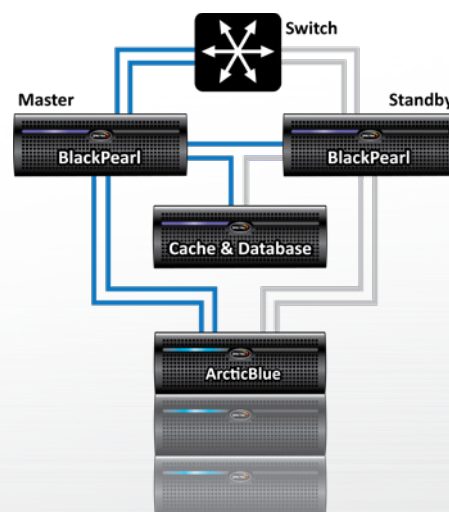
ArcticBlue is a modern, yet simple, capacity-intensive storage system that scales as needed into petabytes, allowing organizations to manage their vast repositories of assets cost effectively with very low TCO. With its simple interface, ArcticBlue helps consolidate islands of storage, and allows the seamless sharing or isolation of content among a host of applications, enabling efficient, innovative workflows.



BlackPearl Multi-Site Configuration



BlackPearl HotPair Configuration



## About Spectra Logic Corporation

Spectra Logic develops data storage solutions that solve the problem of long-term storage for business and technology professionals dealing with exponential data growth. Dedicated solely to storage innovation for nearly 40 years, Spectra Logic's uncompromising product and customer focus is proven by the largest information users in multiple vertical markets globally. Spectra enables affordable, multi-decade data storage and access by creating new methods of managing information in all forms of storage – including archive, backup, cold storage, cloud and private cloud.