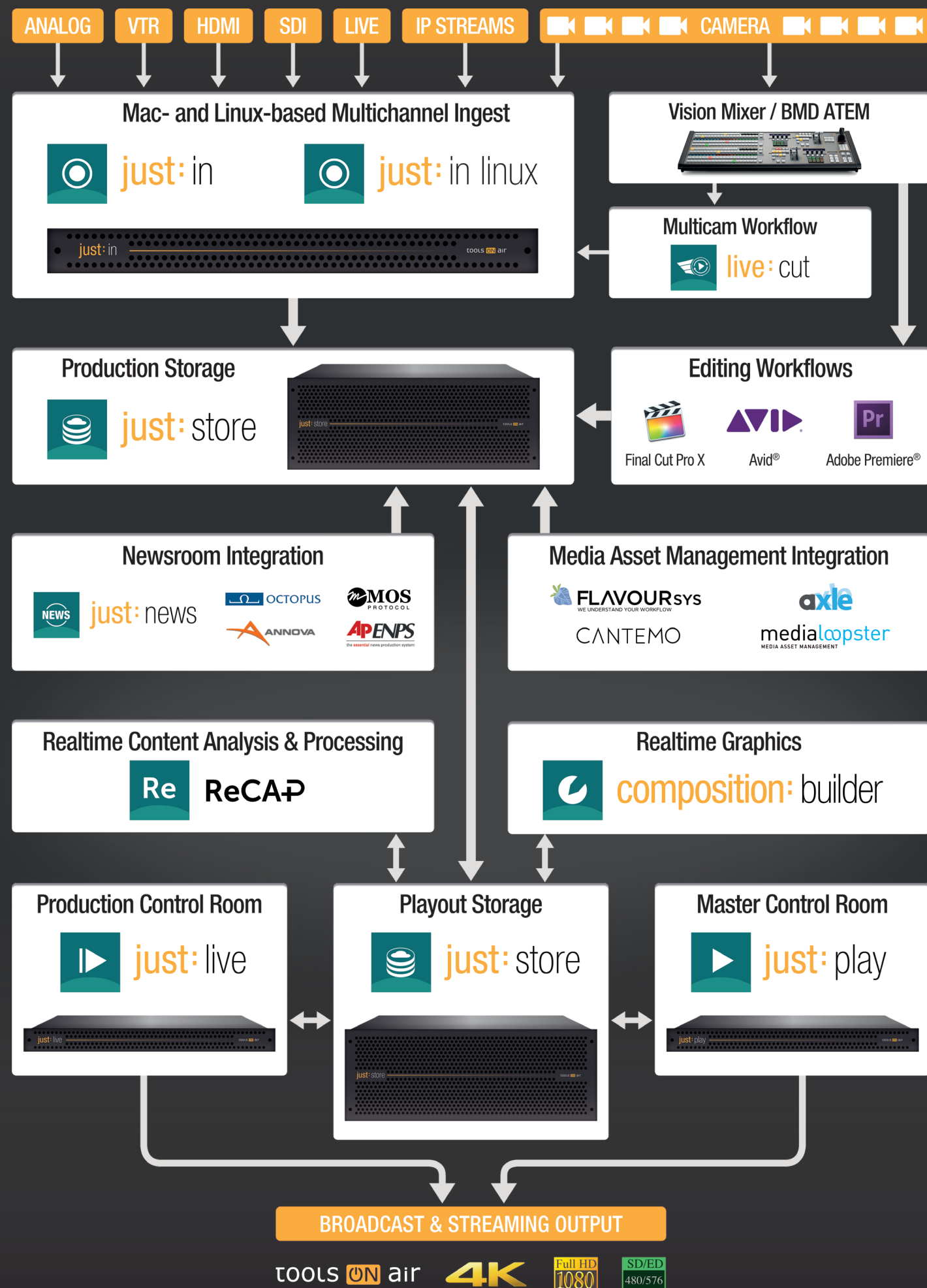


ToolsOnAir Broadcast Suite Workflow Diagram



TV station in a Rack



10 years ago ToolsOnAir did **pioneering work** by introducing the **TV station in a Mac**. Over the past decade we continuously improved our product range of hardware and software to **ingest, manage, schedule, store, deliver and play out** your visions.

Now it's time for the next step.



TOOLS ON air

ToolsOnAir Broadcast Suite

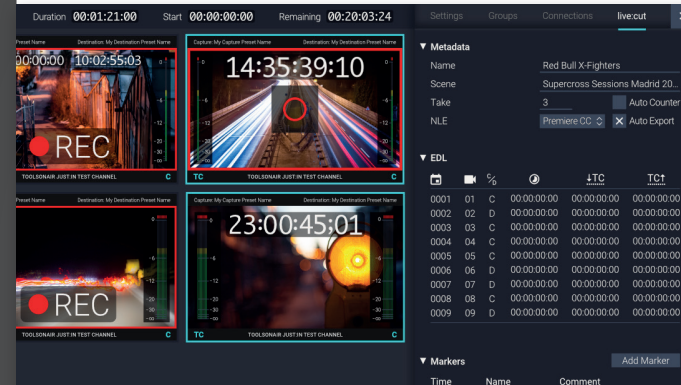
Network-based Ingest Solution
for all Broadcast Needs

- ProRes, XDCAM HD422, AVC-Intra 50M/100M, H.264
- MOV, MXF, MXF OP-Atom, MP4 Containers
- Adobe® Premiere® Pro and Apple Final Cut Pro 7/X Growing File Support



Multicam-Workflow for up to 16 Cameras

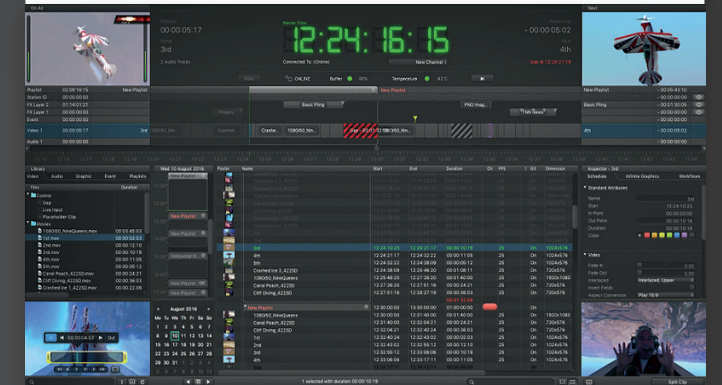
- Instant EDL to Multi-Camera Timeline Conversion
- Vision Mixer and Native Blackmagic Design ATEM Integration
- Works with Apple Final Cut Pro 7/X and Adobe® Premiere® Pro

Live Production Playout for Video
and Realtime Graphics

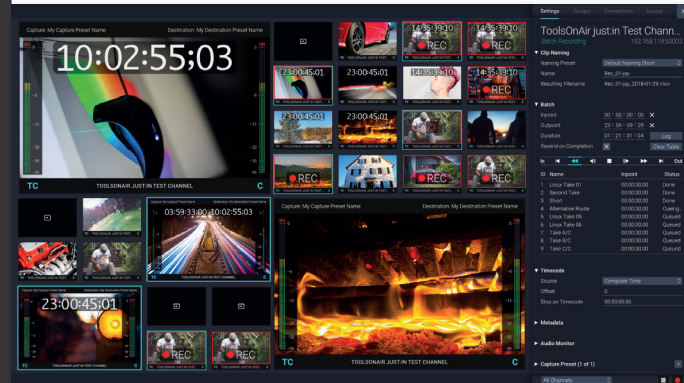
- Manually Controlled Video and Graphics Playout + Router Control
- RTMP Live Stream Publishing
- Highly Customizable via web-based Graphical User Interfaces

24/7 Automated Broadcast Playout
Server with Realtime CG

- Automated Video & Realtime CG Playout Server with Router Control and GPI Support
- RTMP Live Stream Publishing
- Full EAS and CC Support

Network-based Linux Engine
Ingest Solution

- ProRes, XDCAM HD422, AVC-I, H.264 in MOV, MXF and MP4 Containers
- 1 RU Turnkey Appliance for 8 HD Channels or 2 UHD Channels
- Adobe® Premiere® Pro and Apple Final Cut Pro 7/X Growing File Support

Optimized Storage Solution
for Professional Broadcast

- Adaptive Read/Write Prioritization and Intelligent Caching Engine
- Web-Based Administration and Realtime Performance Monitoring
- Support for customized onCore® Workflows

Realtime Graphics Template Editor
for just:live and just:play

- Keyframe/Timeline-based Editor with Realtime Preview
- Import of Images, Movies, PSD, RTF, XML/RSS and QTZ Files
- Versatile Component Repository with Extensive Parameterization



Realtime Content Analysis and Processing

- Automatic Metadata Extraction and Transcoding
- On-Screen Text Extraction (OCR) and Automatic Speech Recognition (ASR)
- Unlimited Machine Learning

