

Spec Sheet

R&S® SpycerBox Cell

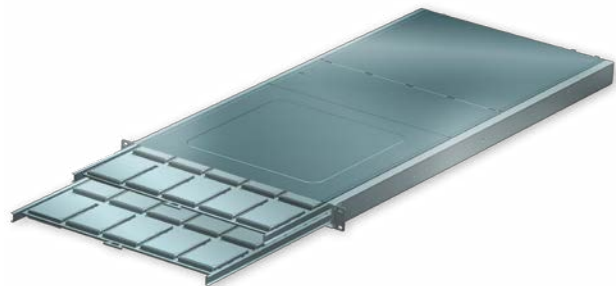
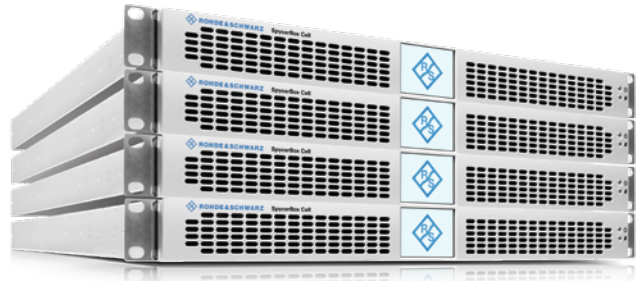
SpycerBox Cell is the new and distinctive storage solution from Rohde&Schwarz DVS, standing out for its high-density layout and redundant setup.

Cascadable thanks to its unique SAS interconnection, the modular and scalable storage concept allows you to easily expand capacity and gain even higher performance as your workflow environment or storage requirements grow.

SpycerBox Cell is based on the idea of offering you all the assets of a powerful and compact storage solution in one unit: The 1U chassis comprises a reliable and easy-to-maintain production storage in maximum density and is equipped with an extensive configuration tool.

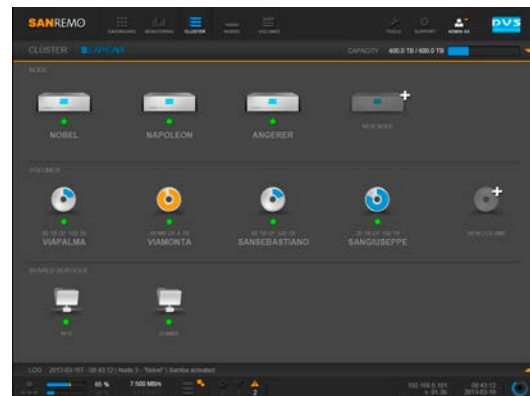
Key benefits

- ▮ Central production high performance storage
- ▮ Supports uncompressed and compressed formats up to 8K
- ▮ Modular storage concept addresses evolving storage demands
- ▮ Powerful combination of storage density and scalability
- ▮ Redundant concept with hot swappable components
- ▮ Low entry level price
- ▮ Extensive monitoring of whole infrastructure
- ▮ Low carbon footprint
- ▮ Available as a SAS, SATA and SSD version
- ▮ Enterprise SAS and SATA disks available
- ▮ SSD version for extreme performance



Technical highlights

- ▮ Clustered storage system with scaling capabilities
- ▮ 1U chassis with compact PCIe backplane comprising 30 drives
- ▮ Up to 3 GB/s superior performance per chassis
- ▮ Tray-based HDD carrier system enables drive hot-swap
- ▮ No single point of failure through clustering
- ▮ Unique SAS switching mechanism for failover



SAN Remo: Configuration management

The GUI SAN Remo will help you to configure and monitor the infrastructure of your SpycerBox systems. SAN Remo allows for the comfortable configuration of your compact storage solutions' infrastructure and software services. Obtain an overview of your hardware status as well as of performance and bandwidth parameters.

Connection methods

- ▮ File sharing with NFS
- ▮ Samba for heterogeneous network architectures
- ▮ SpycerLink between R&S®Spycer-equipped systems
- ▮ Fibre Channel or Ethernet SAN connection
- ▮ Variety of hardware interfaces available (Fibre Channel, 10 or 40 Gbit/s Ethernet)



Fields of application

SpycerBox Cell is perfectly suited for several fields of application. No matter if your workflow is located in a broadcast or post production environment, SpycerBox Cell is a distinctive match. One of Rohde&Schwarz DVS's main characteristics, is its philosophy of openness, e.g. in the system architecture of our products. This allows our systems to interact flexibly in almost any workflow setup with third-party. In combination with our solutions for the broadcast industry (e.g. R&S®VENICE) or the post production arena (e.g. R&S®CLIPSTER), SpycerBox Cell reaches an unprecedented level of performance.

SpycerBox Cell as online storage for broadcast ingest, combined with R&S®VENICE

- | Scalable in capacity and performance
- | Direct realtime ingest
- | No single point of failure
- | Easy to maintain (hot swappable MB, PSU, HDD)
- | Easy to configure with SAN Remo
- | Low entry level price



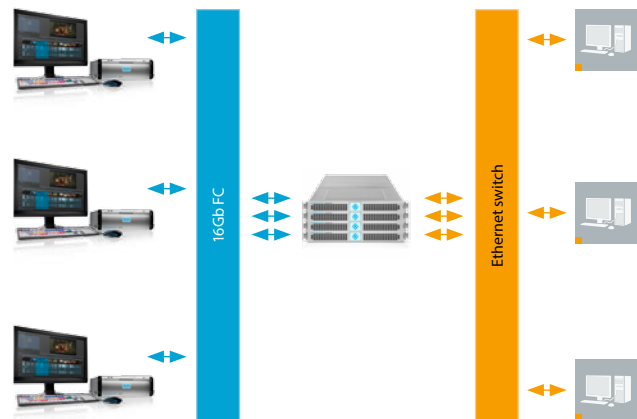
SpycerBox Cell as SAN for post production environment, combined with R&S®CLIPSTER and R&S®Fuze

- | DI workflow (2K/4K online storage)
- | Distribution and mastering (DCI, IMF, AS-02)
- | Scalable in capacity
- | Modular storage concept (grows with your demands)
- | Low entry level price
- | Easy to maintain (hot swappable MB, PSU, HDD)
- | Easy to configure with SAN Remo



Typical configuration

- ▮ Mixed SAN and NAS configuration, connecting SAN and NAS clients
- ▮ No additional metadata or file server necessary
- ▮ RAW capacity of 268TB



Technical data

Capacity

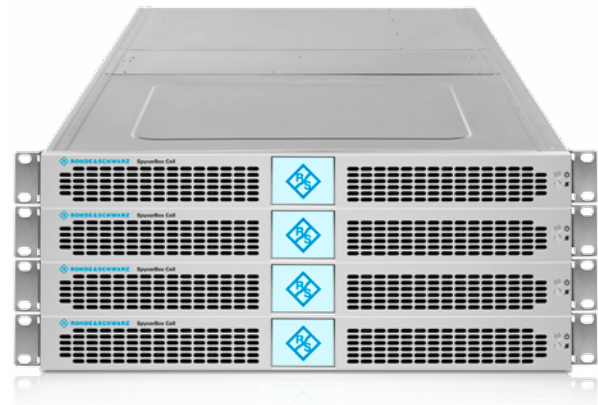
- ▮ SAS: 30 x 900GB= 27TB
- ▮ SAS: 30 x 1,2TB= 36TB
- ▮ SSD: 30 x 480GB= 14,4TB

Performance

- ▮ Up to 3GB/s per system

Number of parallel streams

	1 Cell	2 Cells	4 Cells
2K @ 24	10	20	40
2K @ 48	5	10	20
4K @ 24	3	6	12
4K @ 60	1	2	5
8K @ 24	–	1	2
8K @ 60	–	–	1



Clustering & switches

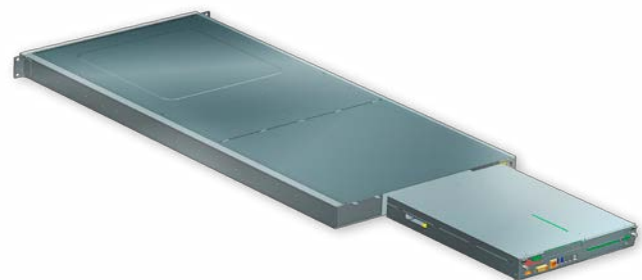
- ▮ Possible clustering of 8 units (or more) -> 16 Port FC switch necessary, resulting in 268TB RAW capacity

Dimensions

- ▮ Height: 4,445 cm (1HU)
- ▮ Width: 47,5 cm (19" chassis)
- ▮ Length: 96 cm
- ▮ Gross Weight: 18 kg
- ▮ Form Factor: 1U

Connectivity

- ▮ 2x 16Gbit FC or 4x8Gbit FC
- ▮ 2x 16GigE (10 GigE/40 GigE optional)
- ▮ 2xUSB 3



About Rohde & Schwarz DVS

For more than 25 years, Rohde & Schwarz DVS GmbH has been very successful in the professional film, video post production and broadcast markets. The specially developed and manufactured hardware and software are applied to the production of popular TV series, Hollywood blockbusters and in Digital Cinema. R&S®CLIPSTER was the first system in the world to make real-time 4K processing possible. The future-proof ingest and production server R&S®VENICE offers a flexible solution for modern, file-based workflows in broadcast environments.

www.dvs.de

Regional contact

Europe, Africa, Middle East

+49 1805 12 42 42* or +49 89 4129 137 74

customersupport@rohde-schwarz.com

North America

1-888-TEST-RSA (1-888-837-8772)

customer.support@rsa.rohde-schwarz.com

Latin America

+1-410-910-7988

customersupport.la@rohde-schwarz.com

Asia/Pacific

+65 65 13 04 88

customersupport.asia@rohde-schwarz.com

This application note and the supplied programs may only be used subject to the conditions of use set forth in the download area of the Rohde & Schwarz website.

Copyright © 2014, all contents by Rohde & Schwarz DVS GmbH. Specifications and data are subject to change without notice. Some features may be part of optional or future packages. All trademarks used herein, whether recognized or not, are the properties of their respective owners. R&S® is a registered trademark of Rohde & Schwarz GmbH & Co. KG

Rohde & Schwarz DVS GmbH

Krepenstr. 8 | D-30165 Hannover

Phone +49 511 67 80 70 | Fax +49 511 63 00 70

www.rohde-schwarz.com | www.dvs.de