

FILE-BASED INGEST!

Multi-resolution and multi-format ingest



EDIT WHILE INGEST | MULTI-FORMATS | WEB-BASED | MULTI-RESOLUTION

mxfsPEEDRAIL is an innovative file-based ingest solution, built on state of the art technology.

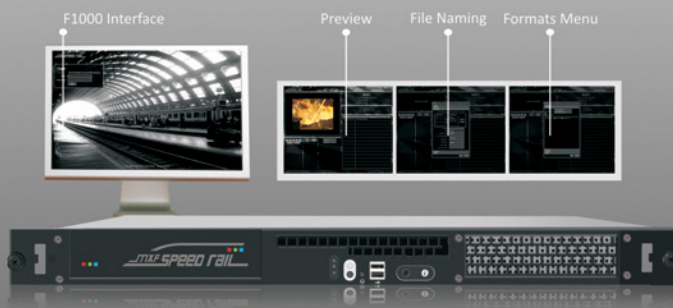
mxfsPEEDRAIL F1000 moves your MXF media (Video, Audio and Metadata) from any location seamlessly into an AVID Unity™ ISIS or MediaNetwork or any other media shared storage.

mxfsPEEDRAIL F1000 fully supports devices such as: SONY XDCAM™, SONY XDCAM™ HD, PANASONIC P2™, Thomson GV Infinity™ and others.

mxfsPEEDRAIL F1000 has several modes of operation available ranging from Unattended to User Driven, enabling users to adapt mxfsPEEDRAIL to their specific Workflow.

mxfsPEEDRAIL F1000 includes a SOAP interface for an easy integration with other systems, and an intuitive web-based GUI for remote monitoring and configuration.

This is the product that turns ingest operations in your facility into team work...



BENEFITS

- Single solution for ingesting material from various devices and locations in multiple formats, with integrated monitoring, configuration and control;
- Workflow automation enabler allowing an easy interaction with Media Asset Managers and Automation systems.

MAIN FEATURES

- Direct preview from devices;
- Ingest media files into post-production storage;
- No need to use an editing suite for ingest;
- Simultaneous ingest of several files;
- Direct ingest from most popular MXF media;
- Direct ingest from FTP servers and network shares;
- Selection of multiple files for ingest;
- Ingest of proxy video and high-resolution audio (XDCAM)
- Multires ingest (high-resolution and/or proxy)
- Growing input files support (read-while-writing);
- Proxy generation from P2;
- Automatic P2 card backup;
- Unattended operation with support for scheduling;
- Monitoring of transfer progress;
- Automatic clip renaming based on user defined templates;
- Hot-Folder;
- Hot-Swap;
- Device metadata ingest;
- Intuitive web-based GUI;
- Ingest job list with comprehensive feed scheduler;
- SOAP interface.

TECHNICAL SPECIFICATIONS

FORMATS

- Sony XDCAM™ DVCAM IMX30, IMX40, IMX50;
- Sony XDCAM™ HD, HD 422;
- Sony XDCAM™ Proxy;
- Sony XDCAM™ EDL;
- Panasonic P2™ DVCPRO® 25, DVCPRO® 50, DVCPRO® 100;
- GV Infinity™ DV25, IMX, MPEG LongGOP;
- Ikegami DV25;
- Others formats on demand.

OUTPUT WRAPPERS

- Avid OPAtom
- Sony OP1a

INTEROPERABILITY

INPUT

- Sony XDCAM™;
- Panasonic P2™;
- Thomson GV Infinity™;
- FTP Servers;
- CIFS Servers.

OUTPUT

- Avid Unity™ MediaNetwork®;
- Avid Unity™ ISIS®;
- Avid MediaManager®;
- Avid Interplay®;
- Omneon MediaGrid™;
- Generic shared storage via CIFS.

OPERATION MODES

UNATTENDED:

- Hot-Folders – Ingest automatically any content dropped on the Hot Folder;
- Hot-Swap - Ingest automatically whenever a disc or memory card is inserted in a connected device.

USER-DRIVEN:

- Manually select the content to ingest.

OPTIONALLY USER CAN:

- Rename the clips;
- Monitor status and progress using the GUIs;
- Start editing as soon as the file starts being ingested (frame chase editing);
- Control mxfsPEEDRAIL via its SOAP interface.